

CCNA 1 Chapter 7 V4.0 Answers

1. Which options are properties of contention-based media access for a shared media? (Choose three.)

non-deterministic

less overhead

one station transmits at a time

collisions exist

devices must wait their turn

token passing

2. What is a primary purpose of encapsulating packets into frames?

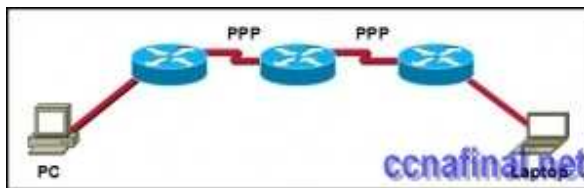
provide routes across the internetwork

format the data for presentation to the user

facilitate the entry and exit of data on media

identify the services to which transported data is associated

3.



Refer to the exhibit. How many unique CRC calculations will take place as traffic routes from the PC to the laptop?

1

2

4

8

16

4. What is true concerning physical and logical topologies?

The logical topology is always the same as the physical topology.

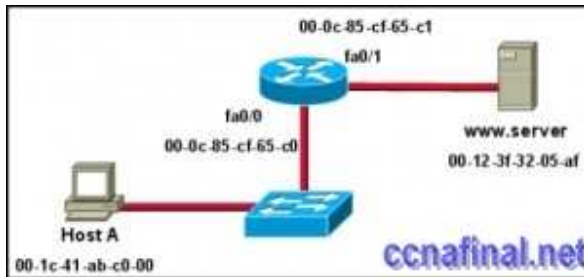
Physical topologies are concerned with how a network transfers frames.

Physical signal paths are defined by Data Link layer protocols.

Logical topologies consist of virtual connections between nodes.

5.

www.ccnafinal.net www.ccnafinalexam.com www.ccnaanswers.org www.ccna4u.net
www.ccna4u.org www.ccna4u.info



Refer to the exhibit. Assuming that the network in the exhibit is converged meaning the routing tables and ARP tables are complete, which MAC address will Host A place in the destination address field of Ethernet frames destined for [00-0c-85-cf-65-c0](#)
[00-0c-85-cf-65-c1](#)
[00-12-3f-32-05-af](#)

6. What are three characteristics of valid Ethernet Layer 2 addresses? (Choose three.)

They are 48 binary bits in length.

They are considered physical addresses.

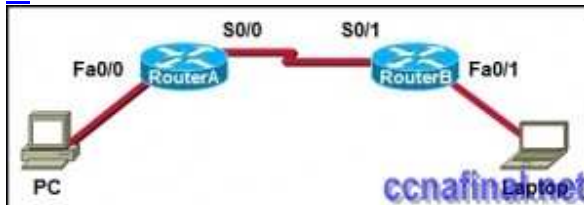
They are generally represented in hexadecimal format.

They consist of four eight-bit octets of binary numbers.

They are used to determine the data path through the network.

They must be changed when an Ethernet device is added or moved within the network.

7.



Refer to the exhibit. A frame is being sent from the PC to the laptop. Which source MAC and IP addresses will be included in the frame as it leaves RouterB? (Choose two.)

source MAC – PC

source MAC – S0/0 on RouterA

source MAC – Fa0/1 on RouterB

source IP – PC

source IP – S0/0 on RouterA

source IP – Fa0/1 of RouterB

8. What determines the method of media access control? (Choose two.)

network layer addressing

media sharing

application processes

logical topology

intermediary device function

9. What is the purpose of the preamble in an Ethernet frame?

is used as a pad for data

identifies the source address

identifies the destination address

marks the end of timing information

****is used for timing synchronization with alternating patterns of ones and zeros**

10. What statements are true regarding addresses found at each layer of the OSI model? (Choose two.)

Layer 2 may identify devices by a physical address burned into the network card

Layer 2 identifies the applications that are communicating

Layer 3 represents a hierarchical addressing scheme

Layer 4 directs communication to the proper destination network

Layer 4 addresses are used by intermediary devices to forward data

11. Which statements describe the logical token-passing topology? (Choose two.)

Network usage is on a first come, first serve basis.

Computers are allowed to transmit data only when they possess a token.

Data from a host is received by all other hosts.

Electronic tokens are passed sequentially to each other.

Token passing networks have problems with high collision rates.

12. Which sublayer of the data link layer prepares a signal to be transmitted at the physical layer?

LLC

MAC

HDLC

NIC

13. What is true regarding media access control? (Choose three.)

Ethernet utilizes CSMA/CD

defined as placement of data frames on the media

contention-based access is also known as deterministic

802.11 utilizes CSMA/CD

Data Link layer protocols define the rules for access to different media

controlled access contains data collisions

14. What is a characteristic of a logical point-to-point topology?

The nodes are physically connected.

The physical arrangement of the nodes is restricted.

The media access control protocol can be very simple.

The data link layer protocol used over the link requires a large frame header.

15. What two facts are true when a device is moved from one network or subnet to another? (Choose two.)

The Layer 2 address must be reassigned.

The default gateway address should not be changed.

The device will still operate at the same Layer 2 address.

Applications and services will need additional port numbers assigned.

The Layer 3 address must be reassigned to allow communications to the new network.

16. What is a function of the data link layer?

provides the formatting of data

provides end-to-end delivery of data between hosts

provides delivery of data between two applications

provides for the exchange data over a common local media

17. Which three factors should be considered when implementing a Layer 2 protocol in a network? (Choose three.)

the Layer 3 protocol selected

the geographic scope of the network

the PDU defined by the transport layer

the physical layer implementation

the number of hosts to be interconnected

18. What is the primary purpose of the trailer in a data link layer frame?

define the logical topology

provide media access control

support frame error detection

carry routing information for the frame

19. A network administrator has been asked to provide a graphic representation of exactly where the company network wiring and equipment are located in the building. What is this type of drawing?

logical topology

physical topology

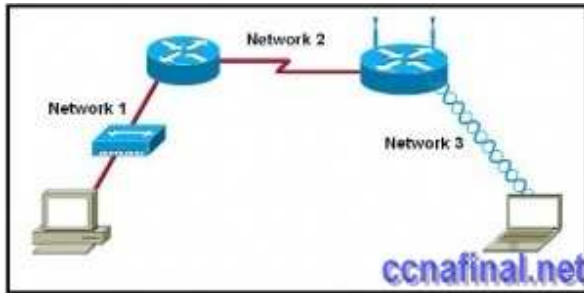
cable path

wiring grid

access topology

20.

www.ccnafinal.net www.ccnafinalexam.com www.ccnaanswers.org www.ccna4u.net
www.ccna4u.org www.ccna4u.info



Refer to the exhibit. Which statement describes the media access control methods that are used by the networks in the exhibit?

All three networks use CSMA/CA

None of the networks require media access control.

Network 1 uses CSMA/CD and Network 3 uses CSMA/CA.

Network 1 uses CSMA/CA and Network 2 uses CSMA/CD.

Network 2 uses CSMA/CA and Network 3 uses CSMA/CD.

Taged:

[ccna 4 0 answer chapter 7](#)

Related Posts

- [CCNA 1 Chapter 11 V4.0 Answers](#)
- [CCNA 1 Chapter 10 V4.0 Answers](#)
- [CCNA 1 Chapter 9 V4.0 Answers](#)
- [CCNA 1 Chapter 8 V4.0 Answers](#)
- [CCNA 1 Chapter 6 V4.0 Answers](#)
- [CCNA 1 Chapter 5 V4.0 Answers](#)
- [CCNA 1 Chapter 2 V4.0 Answers 100% updated 2011](#)
- [CCNA 1 Chapter 1 V4.0 Answers Updated 2011 100%](#)

Tags: [CCNA 1](#), [ccna 1 2011](#), [CCNA 1 Chapter 1](#), [ccna 1 chapter 1 100%](#), [ccna 1 chapter 1 2011](#), [CCNA 1 Chapter 1 Answers](#), [CCNA 1 Chapter 1 V4.0 Answers](#), [ccna 1 module 1](#)

[← CCNA 4 Final Exam Answers \(B\) CCNA 1 Chapter 2 V4.0 Answers 100% updated 2011](#) [→](#)

Leave a Reply

Your email address will not be published. Required fields are marked *